

KESSEL-Wastewater station *Aqualift F Compact Mono/Duo* Installation in the concrete slab, from model year 02/2017

Backwater
protection

1

Hybrid
lifting stations

2

Lifting stations

3

Drains

4

Separators

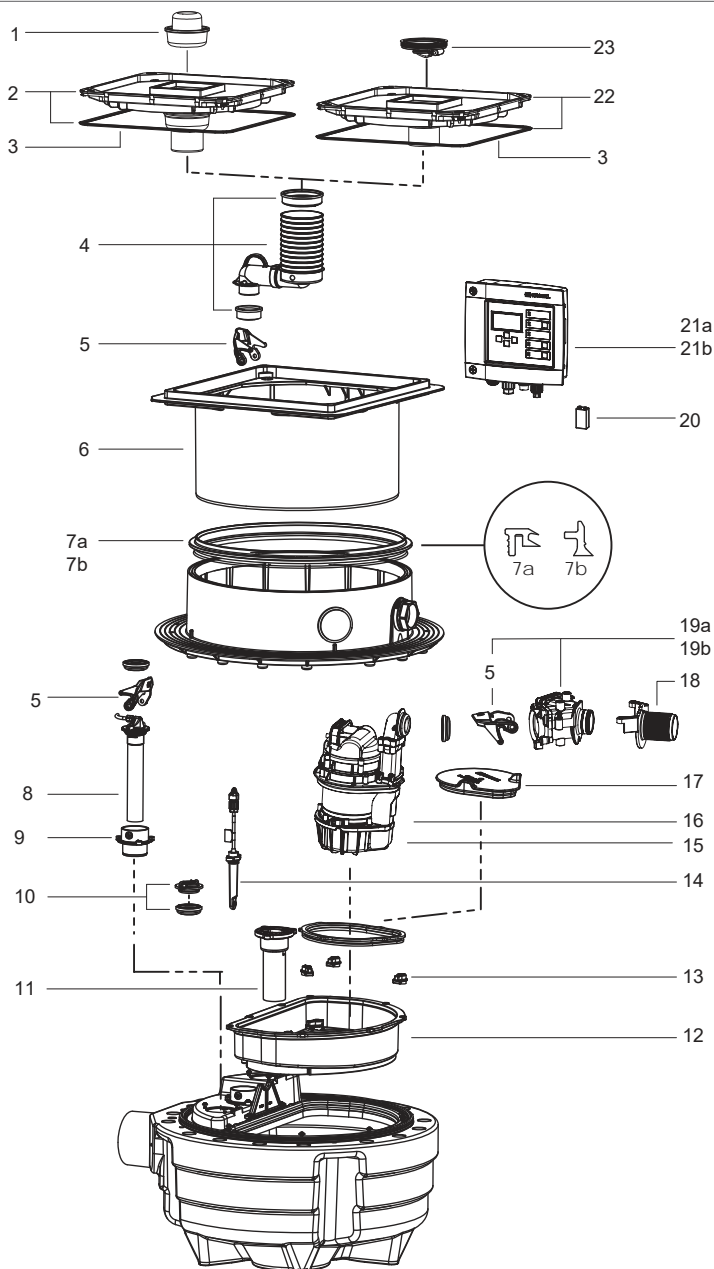
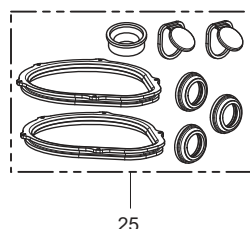
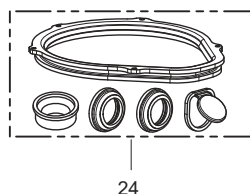
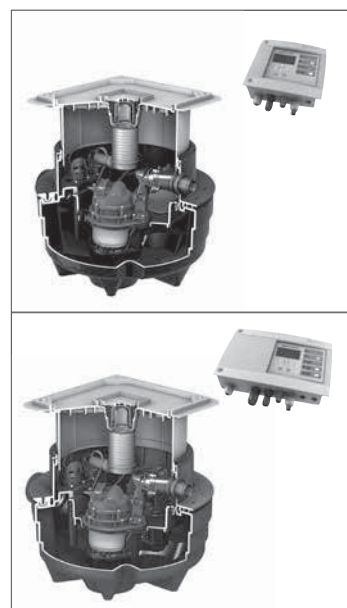
5

Septic systems

6

Rainwater
harvesting

7



Pos.	Designation	Art. #
1	Odour trap	47200
2	Cover plate stone grey, can be tiled over with drain and sealing gasket Ø 75	83055
3	Sealing gasket for cover plate	680025
4	Drain connection, rubber nipple and sealing gasket Ø 75	680075
5	Locking lever	680018
6	Upper section	83061
7	Profile lip seal	
7a	up to model year 06/2014	680026
7b	from model year 07/2014	680150
8	Immersion pipe with horizontal pressure pipe connection	28744
9	Immersion pipe/inlet connection piece set	28734
10	Sealing gasket and cover cap	680076
11	Splash protection set for optical probe	28706
12	Pump plate	28733
13	Safety lever for pump (1x)	680070
14	Optical probe with 3 adaptors	80888

Pos.	Designation	Art. #
15	Blade replacement set	28075
16	Replacement pump KTP 1000 with ext. pressure	28739
17	Cover for pump opening	28732
18	Threaded connection	680676
19	Pumping connection with Locking lever	
19a	Mono	680486
19b	Duo	680487
20	Battery	680034
21	Control unit	
21a	Mono Comfort	28731
21b	Duo Comfort	28746
22	Cover plate stone grey, can be tiled over, with drain and sealing gasket, from model year 01/2011	83045
23	Multistop	43500
24	Mono sealing gasket set	680453
25	Duo sealing gasket set	680454